



Surfacing the future

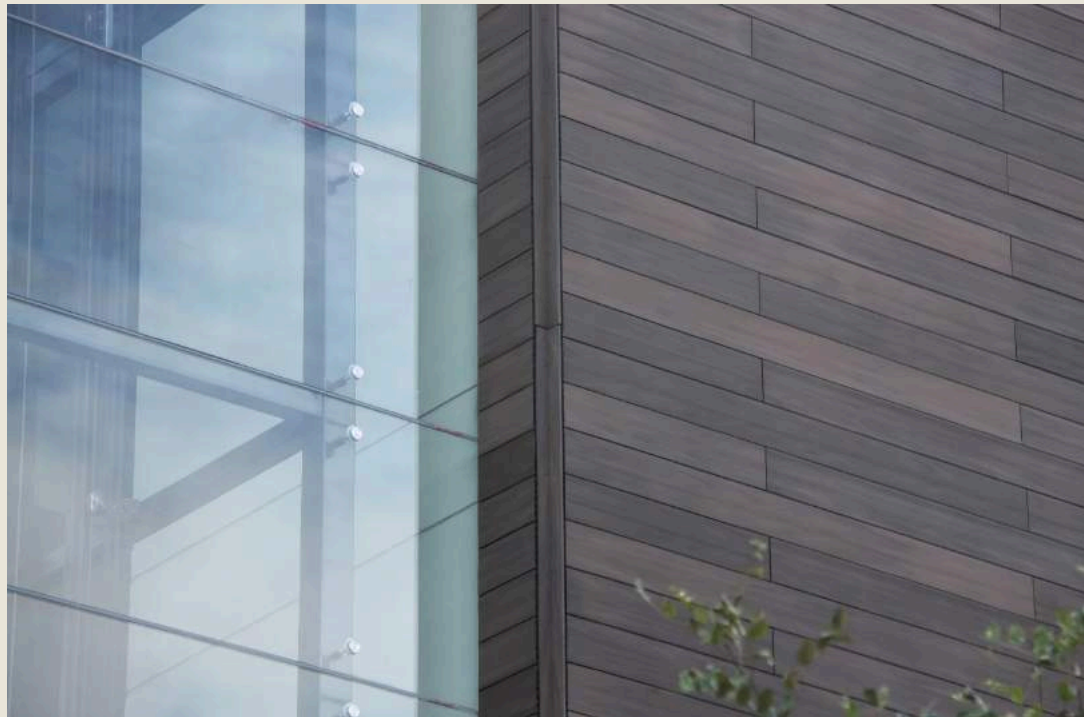


**20
24**



Tarimatec

Discover how the design of tomorrow can be both sophisticated and environmentally friendly with Tarimatec.







The design of the future is 100% sustainable

It has been almost 20 years since our R&D department first developed the Ecofiber Stone Composite used to produce Tarimatec's first ever product, our outdoor decking.

Since then, we have expanded our catalogue with innovative profiles and turned our raw material into an integral element of any unique design project.

In addition, our environmental commitment has allowed us to make huge strides in developing the building materials of the future. **We work shoulder to shoulder with architects, designers and landscape designers who believe in sustainable and environmentally friendly designs.**

Thanks to the excellent ratings of our EPD and Environmental Product Sheet, all Tarimatec profiles guarantee top performance for those projects seeking environmental certifications such as **LEED, BREEAM or VERDE.**

Tarimatec is also committed to working with national suppliers and manufacturers to reduce its carbon footprint. The Ecofiber Stone Composite production process also makes use of waste products, such as rice husk, which is an essential component. This re-use not only has a positive impact on the environment but also contributes towards the excellent physical properties of our profiles.





Quality

With our fully integrated ISO 9001:2015 quality system, verified by AENOR, we take care of every detail to guarantee high-durability, low-maintenance materials. We monitor the entire process, from the start of production to final delivery. In addition, we carry out regular screening and tests to guarantee the quality of our products.

Support

Our team is available to offer advice and technical support to any project from start to finish: from the selection of materials to the installation and maintenance of our products.



Innovation

Through continuous innovation, we have been able to develop new applications to improve the performance of our WPC profiles. Thanks to our R&D department, we are moving ever closer towards a future where creativity, design and sustainability each form an integral part of any design project.

Environment

At Tarimatec, we regularly and carefully scrutinize all of our production processes and methods to reduce our carbon footprint. That is why we have implemented our own ISO 14001:2015 environmental management system, verified by AENOR.

Polyvinyl Chloride

Polyvinyl chloride has been proven to be the polymer with the best properties in the world of construction. The five main characteristics of products made using this polymer are:

Safety: Polyvinyl chloride is a completely harmless and inert material. It is precisely for this reason that it is used in sectors that require high levels of purity and quality, such as healthcare and the food industry. This makes it a safe material.

Petroleum content: Compared to other polymers, polyvinyl chloride is only 43% petroleum compared to 100% for other polymers, such as polyethylene (PE). The remaining 57% comes from sea salt, which is an infinite resource.

Strength: It is the polymer with the best technical properties on the market, as demonstrated by its extensive use in the construction industry. It offers the best guarantees for outdoor applications where it will be subjected to inclement weather and solar radiation.

Excellent fire performance: It is a virtually fireproof material as it is self-extinguishing. Though it may soften when subjected to heat, it does not drip, making it the safest polymer with regards to behavior under fire conditions. As a result, it does not contribute to the spread of fire and is a highly recommended material when seeking excellent fire safety performance.

Recyclability: It is 100% recyclable. When recycled, it can be used to manufacture the same profile or, indeed, any other profile, including pipes, cable insulation, shoe soles, tiles, flooring, etc.

Limestone

In addition to rice husk and polyvinyl chloride, the other main component is crushed limestone (CaCO_3), such as Aragonite or Marble, which provides excellent physical properties, including hardness, flexural strength and impact resistance, and also acts as an excellent natural fungicide.

Crushed limestone also constitutes a significant proportion of the material's composition, with 40 parts of limestone for every 100 parts of polyvinyl chloride.

Ecofiber-Stone Composite

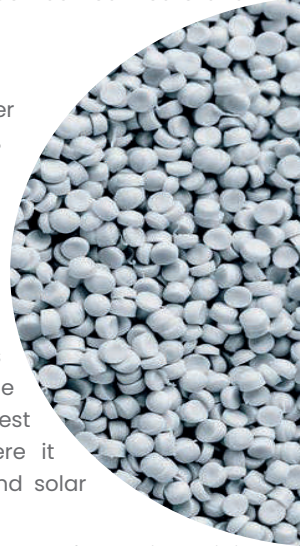
RICE HUSK

The main feature of ECOFIBER-STONE composite is that it is manufactured using a plant fiber. This plant fiber does not come either directly or indirectly from the felling of trees or from wood waste from other products made from trees. The plant fiber

used to produce ECOFIBER-STONE composite comes from rice husks. This means that this fibre is not the result of a recycling process but instead comes from the direct recovery and re-use of a waste product.

At Tarimatec, we have already recovered more than 5,000,000 kg of this waste which, aside from the significant positive environmental impact, provides excellent physical characteristics to our products, including hardness, natural fungicide properties and low water absorption.

Rice husk forms a considerable proportion of the final material, with **50 parts of rice husk for every 100 parts of polyvinyl chloride.**



Aris

Vertical

Aris is our range of decorative panels and friezes. This is a vertical cladding solution that is **quick and simple to install** and is the perfect option for reforming and modifying the design of indoor and outdoor spaces.

Thanks to the high-quality raw material used in its production, Aris profiles require no maintenance or additional treatment, even when installed outdoors.

Three different designs for three different styles that can be arranged either vertically or horizontally:



Square

The regular meander provides continuity to walls, ceilings, façades and furniture. This is an elegant and sophisticated design that will enhance any design. Available in **Nature and Trama finish**.

Cadence

Cadence is a dynamic, positive design with an eye-catching, asymmetrical, modern style for creating striking, unique spaces. Available in **Nature and Trama finish**.

Onna

The texture of the natural wood and the softness of the wavy lines combine to create an elegant, sophisticated design that will enrich any space with its **unique grooved finish**.



Nature & Trama

Aris Square and Aris Cadence are available in two different finishes. The **Nature finish** stands out for its soft brushed texture and is suitable for both indoor and outdoor use. The **Trama finish** is a special embossed finish for indoor spaces and can be used to create a peaceful, elegant style.



Nature

Trama



Surco

The Aris Onna range's **Surco finish** is perfect for both indoor and outdoor spaces, creating a sensory texture that blends perfectly with the profile's symmetrical design.





Luna 2364



Silver 2332



Ipé 2348



Wengué 2204



Polar 2347



Roble 2349



Nogal 2321

The full Aris range of profiles is available in seven main colours: Wenge, Ipe, Oak, Luna, Polar, Walnut and Silver. The rest of the range of colours and special lengths are available on request.



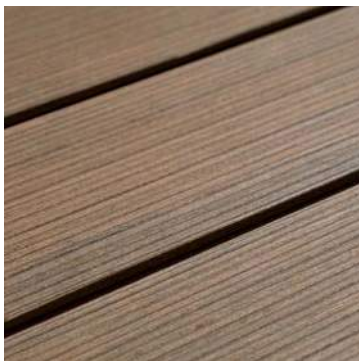
Malibú

Vertical

Malibu is Tarimatec's new collection of decorative panels for both indoor and outdoor projects. The collection has been designed to change the look of any space, from living rooms and bathrooms to patios or façades.

Thanks to extensive testing and a simple installation system, the new Malibu profile is **perfect for creating a ventilated façade**.

The **Surco surface finish** plays with the emotions, evoking the image of traditional wooden coastal houses standing majestically on the beaches of California.



Ipé 2348



Luna 2364



Nogal 2321



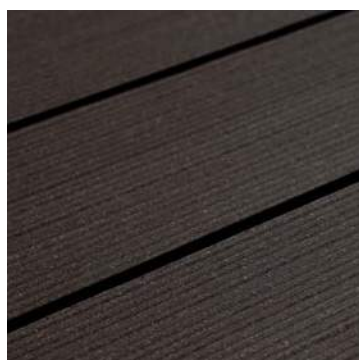
Polar 2347



Roble 2349



Silver 2332



Wengué 2204

Available in seven main colour options: OAK, IPE, WALNUT, POLAR, LUNA, SILVER and WENGUE.



Extensions

Our line of furniture for patios and shared areas has been carefully designed to make it possible to add structure to outdoor spaces using planters and benches. Created by Rafa Ortega, this collection stands out for the boldness of its gentle designs. The combination of white base steel and Ecofiber Stone Composite achieves a balance between nature and strength, creating spaces full of freshness and comfort.

*Available in all colours featured in the catalogue.



Planter bench



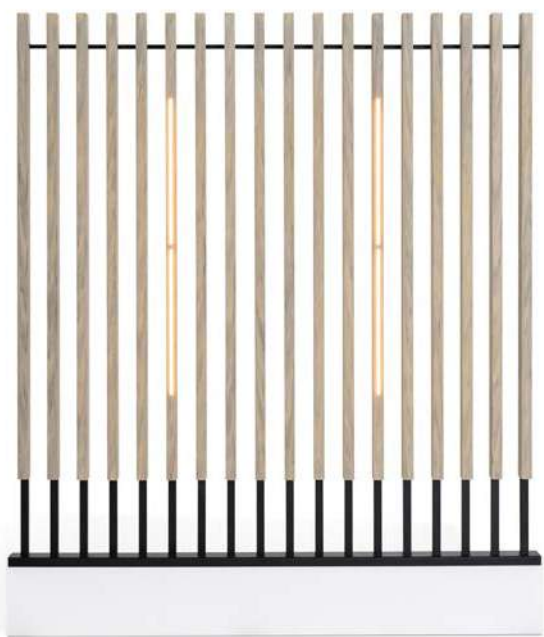
2m Bench



1m Bench



Paloalto Fence



Centinela Fence



Sustainability

- 64% of ECOFIBER-STONE composite dry blend
- 22.5% WPC recovered from scrap, factory waste and recovered end-of-life materials with full quality assurance.
- 10.5% of the shavings produced by the planing/sanding process, which are added again, thereby recovering a waste product and eliminating the carbon footprint associated with transport and management.

At Tarimatec, we are committed to technological innovation combined with sustainability. As a result, our products represent the perfect harmony between nature and technology. ECOFIBER-STONE composite, Tarimatec's innovative raw material, is composed of **50% recycled plant fibre (rice husk)**, thereby having a positive impact on the environment. In addition to this raw material, we also use different proportions of top-quality recycled materials in the manufacturing process.



Our quality policy includes all of our processes covered by ISO 9001:2015 (not just our manufacturing processes). With respect to sustainability and environmental quality, Tarimatec has implemented its own ISO 14001:2015 management system, which has been verified by AENOR.

Tarimatec products also have either an EPD (Environmental Product Declaration) which has been verified and certified by TECNALIA

European ENVIRONDEC platform and makes Tarimatec the **only brand of WPC profiles sold in Spain to have an EPD certificate that bears this prestigious seal of guaranteed quality**

All the suppliers of the raw materials required to manufacture Tarimatec products are 100% sourced in Spain, many of them being **local**, keeping the carbon footprint associated with materials transport to a minimum.

Furthermore, Tarimatec not only manufactures profiles but also **develops and produces its own raw materials**. We transform our dry blend (ECOFIBER-STONE composite) directly into finished product, eliminating the extrusion process required to manufacture intermediate pellets. This means that our electricity consumption is half of that consumed by those who manufacture using pellets.

In addition, to minimize energy consumption, Tarimatec **manufactures its products using almost 60% renewable energy** (56.8%, to be precise).

The entire Tarimatec product range is **100% recyclable**, including all accessories and components. Another fundamental aspect of our commitment to the environment is the **DURABILITY** of our products..

Thanks to the composition and quality of the raw materials used, Tarimatec products have been developed and designed to have a very long useful life with a **25 year guarantee**, as stated in our technical manual.

For all these reasons, Tarimatec products have an extremely valuable role to play for those projects seeking environmental certification, such as LEED, BREAM or VERDE.



Tarimatec's EPD and Environmental Product Sheet demonstrate the extraordinary positive environmental benefits of its entire product range.

Technical



IMPACT AND ABRASION RESISTANT



100% RECYCLABLE / ECO-SUSTAINABLE



HIGH FIRE-RESISTANCE



HIGH DURABILITY



NO CRACKING, CHIPPING OR PEELING



ANTI-SLIP SURFACE



NO NEED FOR ADDITIONAL TREATMENT

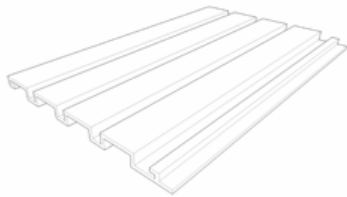


LOW MAINTENANCE

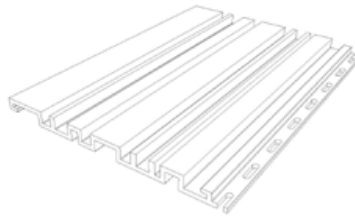


EUROPEAN PRODUCTION

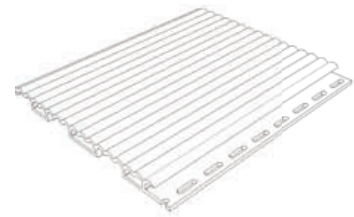
Aris



Aris Square Profile
217.5 x 15 x 3000 mm



Aris Cadence Profile
217.5 x 15 x 3000 mm



Aris Onna Profile
217.5 x 15 x 3000 mm





The only brand of WPC profiles manufactured and marketed in Spain whose EPD declaration is verified by Tecnia Certification, with ENAC accreditation and registered in The International EPD® System-Envirodec. In addition to this, we have the Environmental Product Declaration, verified and published by GBCe.

